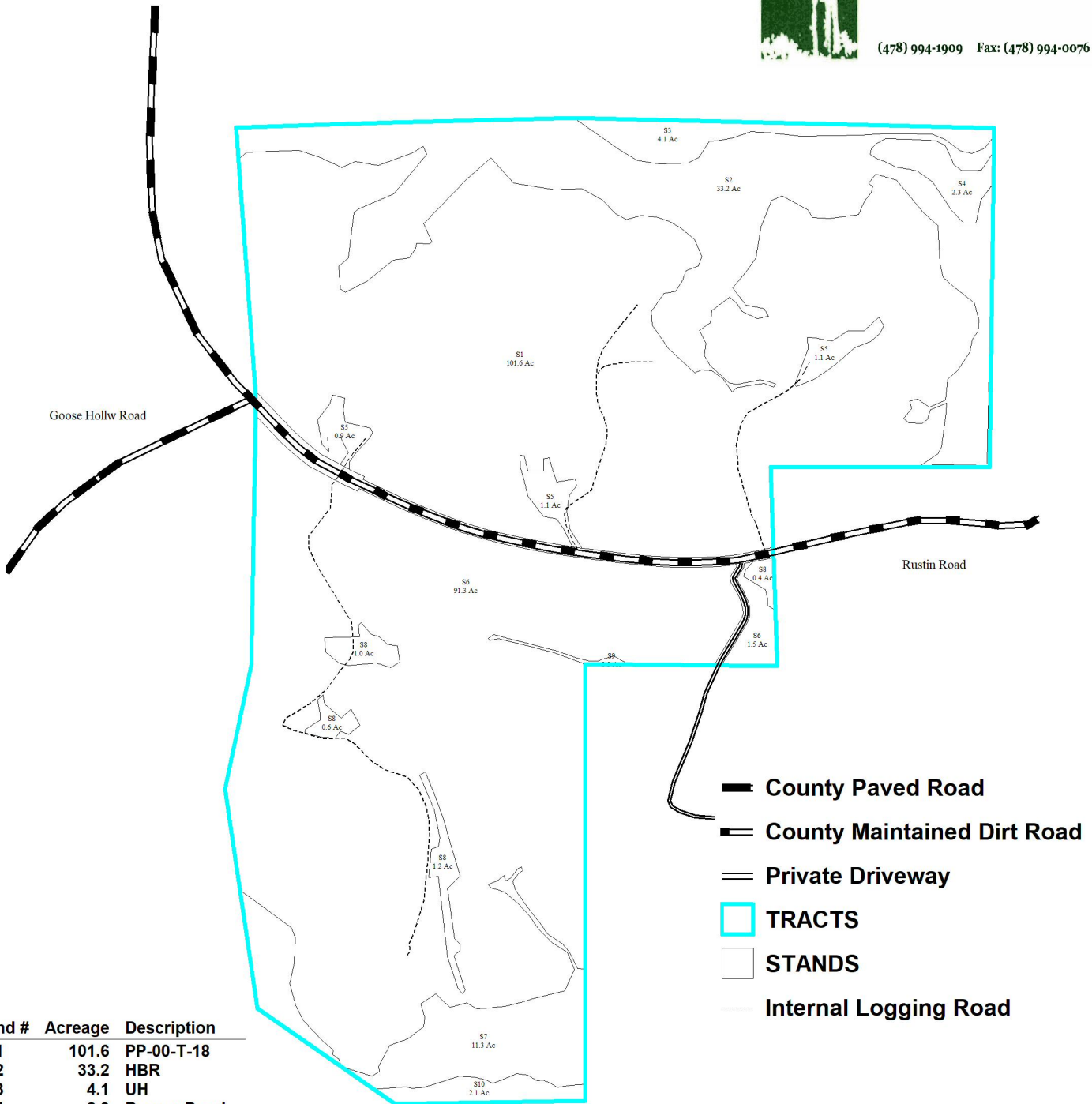


# Swearingen Timber Type Map



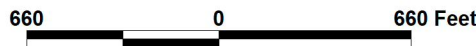
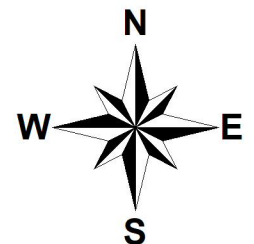
**Farm & Timber Properties, LLC**  
 P.O. Box 1204\* 18 North Jackson Street  
 Forsyth, GA 31029  
**James G. Thwaite**  
 Georgia Registered Forester #2039  
 Licensed Georgia Real Estate Broker

(478) 994-1909 Fax: (478) 994-0076



Stand #	Acreage	Description
1	101.6	PP-00-T-18
2	33.2	HBR
3	4.1	UH
4	2.3	Beaver Pond
5	3.0	Open/Log Deck
6	92.8	PP-00-T-18
7	11.3	HBR
8	3.2	Open/Log Deck
9	0.3	HBR
10	2.1	Water

Total Acreage: 253.8



Scale = 1 : 660.00 (In : Feet)

03-09-2022